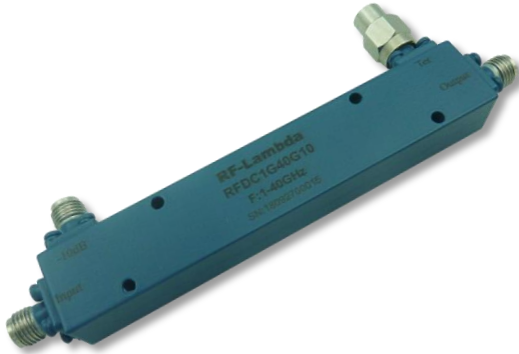




### Coaxial 20W 10dB Directional Coupler 1 - 40GHz



#### Features

- High power handling up to 20W
- Ultra Wide band operation
- Functional Bandwidth : 0.5GHz to 43.5 GHz
- High directivity within operational band
- Low Insertion Loss
- High peak to average handling capability

#### Typical Applications

- Test and Measurement
- Aerospace and military applications
- LMDS multi-carrier operation

Electrical Specifications,  $T_A=25\text{ }^\circ\text{C}$

Parameter	Min.	Typ.	Max.	Min.	Typ.	Max.	Units
Frequency Range	1		18	18		40	GHz
Nominal Coupling	8.5	10	11.5	8.5	10	11.5	dB
Frequency Sensitivity		$\pm 0.7$	$\pm 1.0$		$\pm 0.7$	$\pm 1.0$	dB
Directivity	12	14		10	12		dB
Insertion Loss (Excl Coupling)			1.5			2.5	dB
Insertion Loss (True)		1.7	2.0		2.5	3.0	dB
VSWR Primary		1.4	1.5		1.6	1.7	:1
VSWR Secondary		1.4	1.5		1.6	1.7	:1
Power Rating	Average	20					W
	Peak	300					W
Impedance	50					Ohms	
Weight	1.76					Ounces	
Input / Output Connectors	2.92mm - Female						
Material	Aluminum						
Finish	Blue Paint						

Coaxial 20W 10dB Directional Coupler 1 - 40GHz



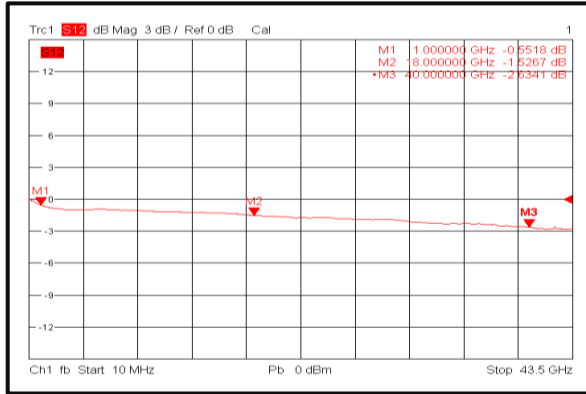
**Environmental Specifications and Test Standards**

Parameter	Standard	Description
Operational Temperature	MIL-STD-39016	-45°C~+85°C
Storage Temperature		-55°C~+125°C
Thermal Shock		1 Hour@ -45°C → 1 Hour @ +85°C (5 Cycles)
Random Vibration		Acceleration Spectral Density 6 (m/s) Total 92.6 RMS
Electrical & Temperature Burn In		Temperature +85°C for 72 Hours
Shock		1. Weight >20g, 50g half sine wave for 11ms, Speed variation 3.44m/s 2. Weight <=20g, 100g Half sine wave for 6ms, Speed variation 3.75m/s 3. Total 18 times (6 directions, 3 repetitions per direction).
Altitude		Standard: 30,000 Ft (Epoxy Sealed Controlled Environment) Optional: Hermetically Sealed (60,000 ft. 1.0 PSI min)
Hermetically Sealed (Optional)	MIL-STD-883	MIL-STD-883 (For Hermetically Sealed Units)

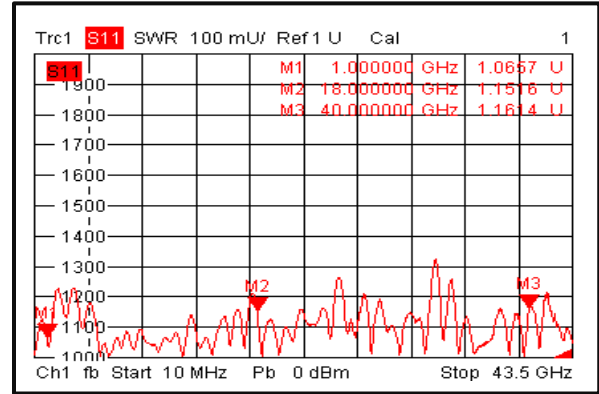


**Typical Performance Plots**

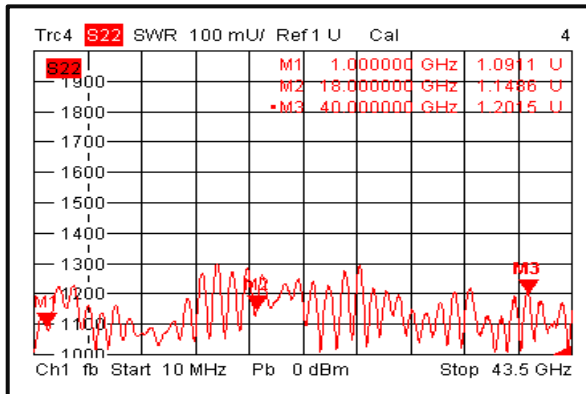
**Insertion Loss**



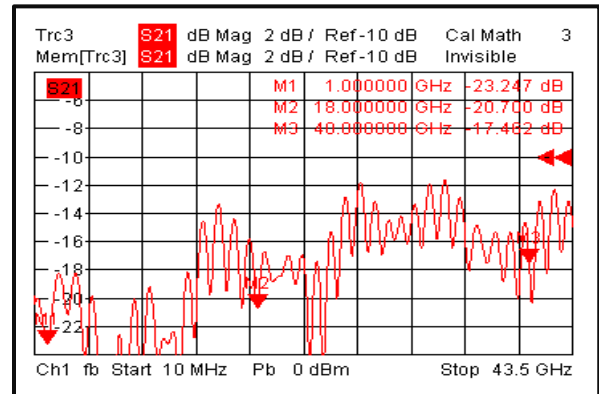
**Primary VSWR**



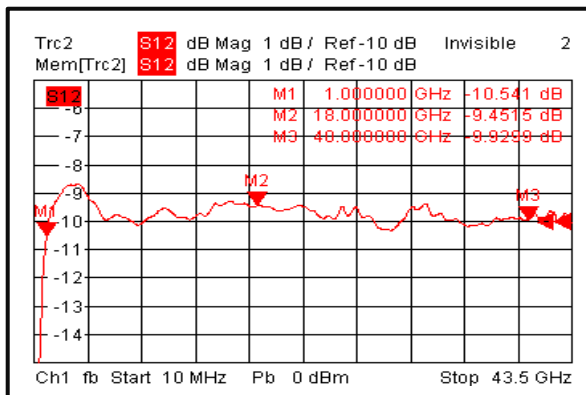
**Secondary VSWR**



**Directivity**



**Nominal Coupling**





# RF-LAMBDA

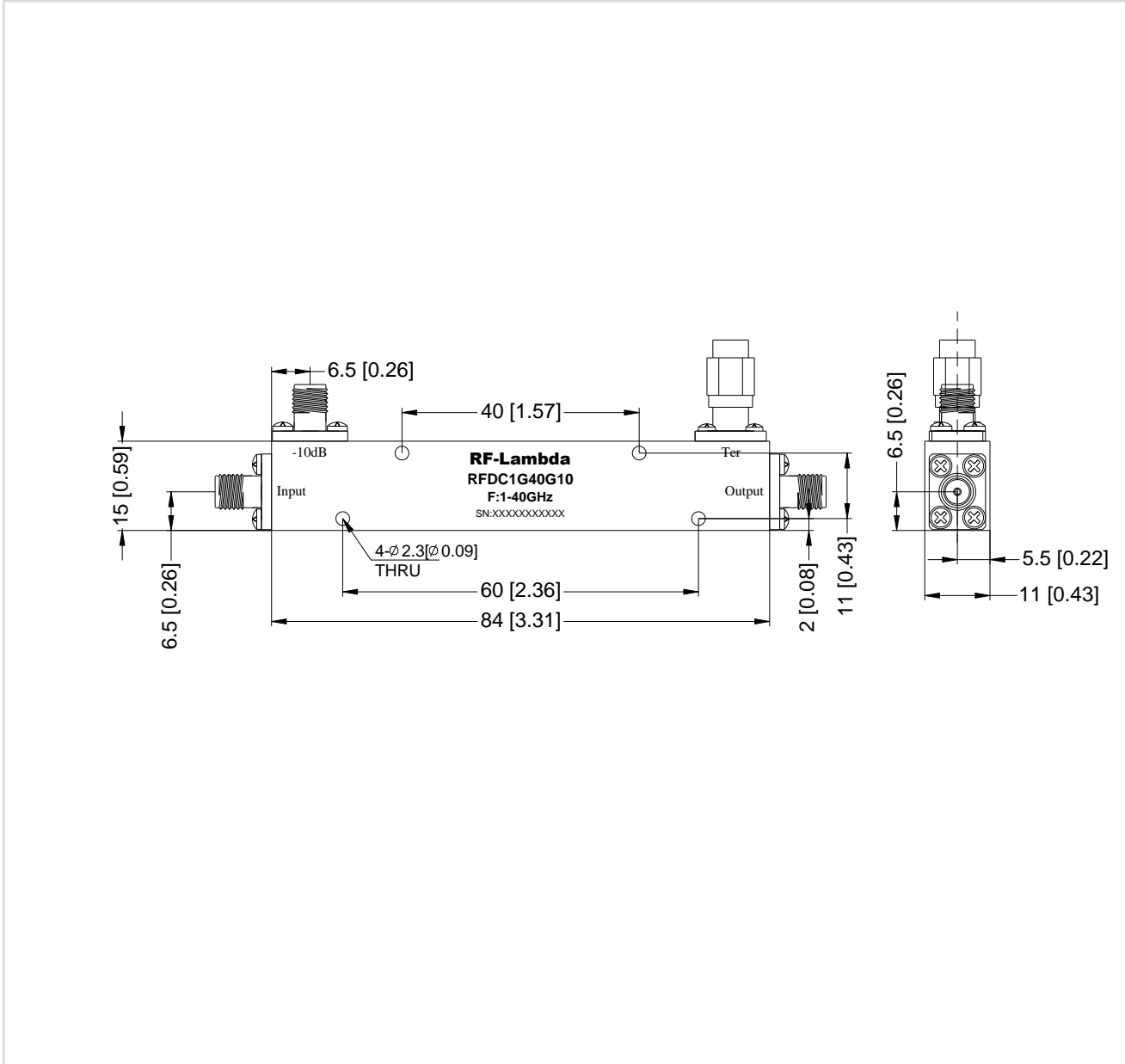
LEADER OF RF BROADBAND SOLUTIONS

## RFDC1G40G10

### Outline Drawing:

All Dimensions in mm [inches]

Tolerance  $\pm 0.25$  [0.01]



Coaxial 20W 10dB Directional Coupler 1 - 40GHz

### Important Notice

The information contained herein is believed to be reliable. RF-Lambda makes no warranties regarding the information contained herein. RF-Lambda assumes no responsibility or liability whatsoever for any of the information contained herein. RF-Lambda assumes no responsibility or liability whatsoever for the use of the information contained herein. The information contained herein is provided "AS IS, WHERE IS" and with all faults, and the entire risk associated with such information is entirely with the user. All information contained herein is subject to change without notice. Customers should obtain and verify the latest relevant information before placing orders for RF-Lambda products. The information contained herein or any use of such information does not grant, explicitly or implicitly, to any party any patent rights, licenses, or any other intellectual property rights, whether with regard to such information itself or anything described by such information. RF-Lambda products are not warranted or authorized for use as critical components in medical, life-saving, or life sustaining applications, or other applications where a failure would reasonably be expected to cause severe personal injury or death.